

3/4" Metallic Models Pro-Series Pumps

3/4" Metallic Performance Specifications

Ratio:	1:1
Maximum Flow:	13.6-g.p.m. (51.5-l.p.m.)
Displacement per cycle:	.030-Gallons (0.11-Liters)
Air Inlet: (Female)	1/4 - 18 P.T.F. SAE Short
Fluid Inlet:	3/4 - 14 N.P.T.F.-2
	Rp 3/4 (3/4 -14 BSP, parallel)
Fluid Outlet:	3/4 - 14 N.P.T.F.
	Rp 3/4 (3/4 -14 BSP, parallel)
Max. operating pressure:	100-psi (6.9-bar)
Suspended solids max. dia.:	3/32" (2.4-mm)
Weight: lbs (kg)	8.74 (3.96)
Maximum dry suction lift: ft (m)	15 (4.5)



Ordering Menu

PD07	R	-	X	X	S	-	X	X	X
Model Series	Center Section Material		Fluid Connection	Fluid Caps/Manifold Material	Hardware Material		Seat Material	Ball Material	Diaphragm Material
Standard	R Polypropylene		A 3/4" N.P.T. B 3/4" BSP	A Aluminum	S Stainless Steel		F Aluminum P Polypropylene S Stainless Steel	A Santoprene® C Hytrel® T PTFE	A Santoprene® C Hytrel T PTFE

Accessories

Air Line Connection Kit* | Kit No. 66073-1

Kit includes Piggyback Filter/Regulator with gauge, pipe nipple and a 5-foot section of air hose.

Muffler Kit | Kit No. 637438 (ported exhaust)

Service Repair Kits | Kit No. 637428 (air section)

Kit No. 637427-XX (fluid section)

Wall Mount | 76763

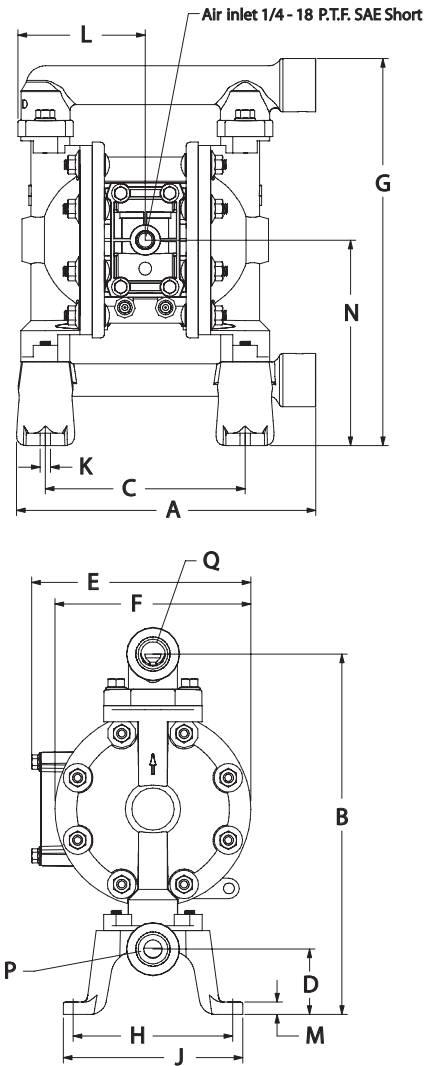
*Please note pumps are not included with these kits.



Air Line Connection Kit
66073-1

3/4" Metallic Dimensions and Flow Curves Pro-Series Pumps

3/4" Metallic Dimensions and Flow Charts

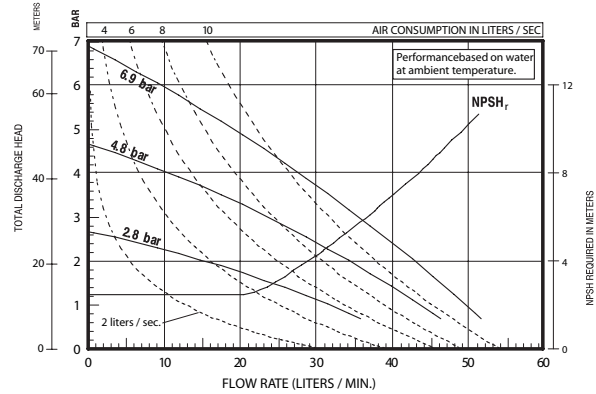
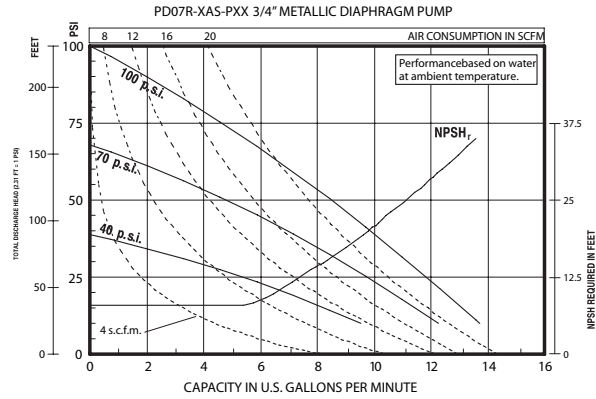


DIMENSIONS

A - 9-9/32" (235.3mm)	F - 6" (152.4mm)	L - 3-29/32" (99.2mm)
B - 11-1/16" (280.4mm)	G - 11-7/8" (301.2mm)	M - 3/8" (9.5mm)
C - 6-1/8" (155.6mm)	H - 4-29/32" (124.2mm)	N - 6-5/16" (159.8mm)
D - 2" (50.8mm)	J - 5-1/2" (139.7mm)	
E - 6-23/32" (170.6mm)	K - 5/16" (8.0mm)	

Model	"P" Material Inlet	"Q" Material Outlet
PD07R-AAS-PXX	3/4- 14 N.P.T.F. - 2	3/4- 14 N.P.T.F. - 2
PD07R-BAS-PXX	Rp 3/4(3/4- 14 BSP)	Rp 3/4(3/4- 14 BSP)

NOTE: Dimensions are shown in inches and (mm) and are supplied for reference only



Refer to www.ingersollrandproducts.com for full size flow curves.

For additional information contact technical support at 1.800.483.4981

METALLIC